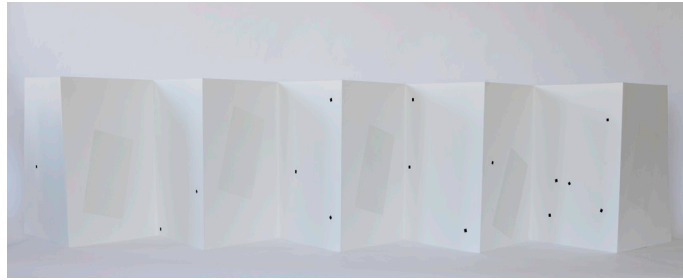
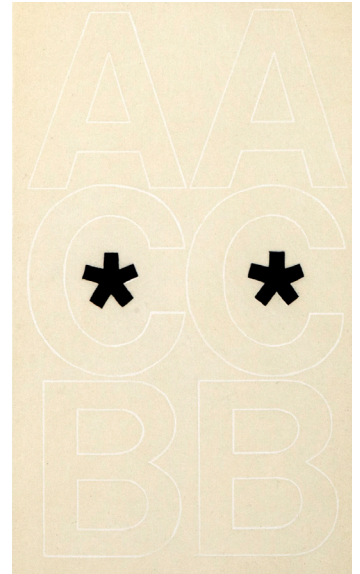
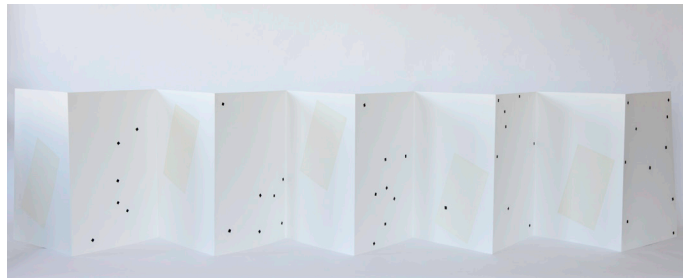


**SEBASTIAN BLACK**

*Period Piece Simple Sequence*, 2014  
color etching and aquatint leporello in screen  
printed slip case  
folded size 19.75 x 13.75 inches  
edition of 20  
published by Wingate Studio



*Period Piece Simple Sequence*, 2014  
color etching and aquatint leporello in screen  
printed slip case  
folded size 19.75 x 13.75 inches  
edition of 20  
published by Wingate Studio



*Period Piece Peepers*, 2015  
color etching and aquatint  
plate 12 x 16 inches, sheet 11.75 x 15.75 inches  
edition of 20  
published by Wingate Studio

Wingate Studio is pleased to present two etchings by Sebastian Black, *Period Piece Peepers* and *Period Piece Simple Sequence*. Both editions are part of a larger body of work entitled *Period Pieces* that utilize commercial vinyl letter set sheets in Helvetica typeface as their common grammar. The letter sets are the ubiquitous kind found at hardware stores and on mailboxes, and reference advertising, commercial signage, and industrial design. Black strips the letters from the sheets, leaving subtle white on white readymade compositions. By reconstructing these compositions in different formats, Black abstracts them from their intended meaning, calling into question their original significance as signs and signifiers.

The first etching, *Period Piece Simple Sequence*, is composed of two sculptural 10-panel, accordion folded pieces, one printed in a cool white and one in a warm white. Black periods accumulate from panel to panel from one to ten. Each set of two is presented in a cloth-covered screen printed slipcase. The second edition, *Period Piece Peepers*, is a two plate aquatint etching printed on a single sheet. An off white image of the letters AA CC BB is overlaid with two black asterix, offering a figurative element. Letters and punctuation are grouped in combinations that are seemingly random but are based on a utilitarian use of space on the sheet.

The artist captures the physicality of the material he references through his use of deep aquatint etchings, which leave a thick layer of ink on the paper when printed. The physical presence of the ink hangs in balance with the subtlety of the palate and the thin line quality of the symbols. Recreating *Period Pieces* through the complex and laborious intaglio process is a further separation of these images from their origin, emphasizing the recontextualization of these signs.

Sebastian Black (b. 1985 New York City) is based in New York City and has exhibited his work at Cherry and Martin, Los Angeles; Queer Thoughts, Chicago; Room East, NYC; Bodega, NYC; C L E A R I N G, Brooklyn; Karma, Amagansett, NY; National Exemplar, NYC; Tomorrow Gallery, Toronto; Nymphius Projekte, Berlin; Kathleen Cullen Fine Arts, NYC; Galeria Zero, Milan; 247365, NYC; Harris Lieberman, NYC; and Kunsthalle Andtrax, Mallorca, Spain. He received his undergraduate degree from Vassar College in 2007, and his MFA from Columbia University in 2012. He is a regular contributor to Art in America, and is represented by C L E A R I N G in Brooklyn, NY and Brussels, Belgium.

For further information and sales inquiries please email [info@wingatestudio.com](mailto:info@wingatestudio.com).